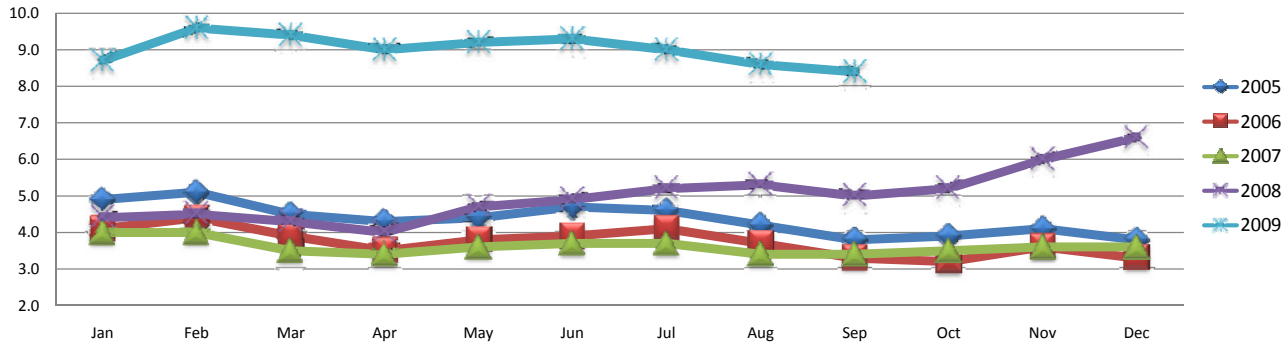




### Asheville MSA Unemployment Rates



Source: NC Employment Security Commission

Unemployment Rate %	Monthly Data			AVG Y-T-D 2008	AVG Y-T-D 2009	Change
	September 2008	September 2009	Change			
Asheville City	4.7	7.4	2.7	4.3	7.7	3.4
Buncombe County	4.9	8.2	3.3	4.5	8.7	4.1
Haywood County	5.5	8.5	3.0	5.3	9.9	4.5
Henderson County	4.9	8.6	3.7	4.5	9.2	4.7
Madison County	5.6	9.3	3.7	5.6	9.6	4.0
Asheville Metro*	5.0	8.4	3.4	4.7	9.0	4.3
North Carolina	6.4	10.4	4.0	5.9	10.8	5.0
United States	6.0	9.5	3.5	5.5	9.2	3.7

Source: US Bureau of Labor Statistics

Total Employment (metro area*)	September 2008	September 2009	% Change	AVG Y-T-D 2008	AVG Y-T-D 2009	% Change
Total Employment (nonfarm)	176,400	168,500	-4.5%	176,244	168,178	-4.6%

Source: US Bureau of Labor Statistics

Major Industry Employment (metro area*)	September 2008	September 2009	% Change	AVG Y-T-D 2008	AVG Y-T-D 2009	% Change
Construction	10,800	9,500	-12.0%	11,178	9,511	-14.9%
Manufacturing	19,700	18,000	-8.6%	20,244	18,356	-9.3%
Retail Trade	23,000	22,200	-3.5%	23,178	22,489	-3.0%
Transportation and Utilities	4,600	4,300	-6.5%	4,633	4,322	-6.7%
Wholesale	5,200	5,000	-3.8%	5,289	5,044	-4.6%
Information	2,000	2,000	0.0%	2,122	2,067	-2.6%
Financial Activities	5,900	5,600	-5.1%	6,056	5,689	-6.1%
Professional & Business Services	16,300	15,200	-6.7%	16,567	14,344	-13.4%
Health Services & Private Education	30,200	31,000	2.6%	29,744	30,589	2.8%
Leisure and Hospitality	23,400	22,200	-5.1%	23,233	21,978	-5.4%
Government (federal, state, and local)	27,400	26,000	-5.1%	26,422	26,244	-0.7%

Source: US Bureau of Labor Statistics (preliminary)

Utilities (Buncombe County)	September 2008	September 2009	% Change	AVG Y-T-D 2008	AVG Y-T-D 2009	% Change
Number of Active Electric Customers	120,396	na		119,742	na	

Source: Progress Energy

Residential Activity (Asheville MLS area)	September 2008	September 2009	% Change	Y-T-D 2008	Y-T-D 2009	% Change
Number of Homes Sold	177	217	22.6%	1,956	1,546	-21.0%
Average Price of Homes Sold	\$271,765	\$264,793	-2.6%	\$275,835	\$263,388	-4.5%

Source: North Carolina Association of REALTORS

Tourism (Buncombe County)	September 2008	September 2009	% Change	Y-T-D 2008	Y-T-D 2009	% Change
Hotel/Motel Sales	\$13,432,408	\$13,211,499	-1.6%	\$117,938,037	\$105,075,200	-10.9%

Source: Buncombe County TDA

Airport Activity	September 2008	September 2009	% Change	Y-T-D 2008	Y-T-D 2009	% Change
Total Passengers	47,865	50,210	4.9%	405,640	\$432,371	6.6%

Source: Asheville Regional Airport

\*Asheville metro area includes Buncombe, Haywood, Henderson and Madison counties.

For detailed information, published listings, market reports, and analysis, contact:

**Economic Development Coalition Research Department (828) 258-6137, email edcresearch@ashevillechamber.com**

See reverse side for more data.

Sponsored by:

The seeds he planted in 1897 continue to bear fruit today.

Founded by George Vanderbilt over a century ago, our family of companies remains devoted to growing strong communities in Western North Carolina.

See how quality is what Biltmore Farms is about at [www.biltmorefarms.com](http://www.biltmorefarms.com). Or call 828-209-2000.

**BILTMORE FARMS**  
Established 1897

## Building Permits

Asheville Metro*	Monthly Data			Y-T-D 2008	Y-T-D 2009	% Change
	September 2008	September 2009	% Change			
New Residential Permits (total units)	126	97	-23.0%	1,516	977	-35.6%
Value of New Residential Permits	\$31,538,000	\$21,811,000	-30.8%	\$338,751,000	\$189,424,000	-44.1%

Source: US Census Bureau

## The Four-County Asheville Metro Includes Individual Permitting Agencies Listed Below:

City of Asheville	Monthly Data			Y-T-D 2008	Y-T-D 2009	% Change
	September 2008	September 2009	% Change			
New Commercial Permits	17	9	-47%	185	73	-61%
Value of New Commercial Permits	\$11,920,415	\$3,431,945	-71%	\$153,212,296	\$33,922,349	-78%
Value of Add/Alter Commercial Permits	\$4,229,172	\$10,596,879	151%	\$53,885,410	\$60,986,348	13%
New Residential Permits (total units)	56	34	-39%	477	211	-56%
Value of New Residential Permits	\$8,377,630	\$14,492,336	73%	\$89,146,190	\$33,352,341	-63%

Source: City of Asheville

Town of Black Mountain	Monthly Data			Y-T-D 2008	Y-T-D 2009	% Change
	September 2008	September 2009	% Change			
New Residential Permits (total units)	3	2	-33%	37	12	-68%
Value of New Residential Permits	\$1,390,000	\$1,135,000	-18%	\$12,321,605	\$3,592,540	-71%

Source: US Census Bureau

Buncombe County (Unincorporated Area)	Monthly Data			Y-T-D 2008	Y-T-D 2009	% Change
	September 2008	September 2009	% Change			
New Commercial Permits	6	2	-67%	68	65	-4%
Value of New Commercial Permits	\$2,100,500	\$385,000	-82%	\$51,600,741	\$34,082,937	-34%
Value of Add/Alter Commercial Permits	\$256,400	\$798,500	211%	\$8,280,666	\$8,054,474	-3%
New Residential Permits (total units)	44	35	-20%	551	356	-35%
Value of New Residential Permits	\$11,693,503	\$6,920,357	-41%	\$149,980,639	\$89,495,468	-40%
New Mobile Home Permits	24	21	-13%	233	155	-33%
Value of All Mobile Home Permits	\$1,236,229	\$796,844	-36%	\$9,690,809	\$6,004,480	-38%

Source: Buncombe County

Haywood County (Unincorporated Area)	Monthly Data			Y-T-D 2008	Y-T-D 2009	% Change
	September 2008	September 2009	% Change			
Estimated New Residential Permits (total units)	12	11	-8%	150	105	-30%
Estimated Value of New Residential Permits	\$2,489,432	\$2,311,666	-7%	\$31,329,272	\$21,859,881	-30%

Source: US Census Bureau

Henderson County	Monthly Data			Y-T-D 2008	Y-T-D 2009	% Change
	September 2008	September 2009	% Change			
New Residential Permits (total units)	22	26	18%	411	244	-41%
Value of New Residential Permits	\$6,238,720	\$6,506,724	4%	\$91,491,666	\$49,953,551	-45%

Source: US Census Bureau